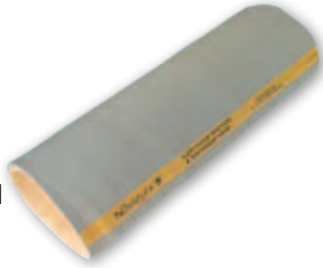


Novaflex 6200 Flour Suction Hose

Designed for the transfer of dry edible food products such as sugar, flour, beans etc. Use of helix wire is recommended for static dissipation. This ultra smooth microbe resistant tube is built on special stainless steel mandrels for cleanliness.



Part No.	I.D.	O.D.	Plies	WP psi	WT LBS/FT
6200WG-02000-00	2	2.68	2	100	1.53
6200WG-03000-00	3	3.73	2	100	2.52
6200WG-04000-00	4	4.81	2	100	3.76
6200WG-05000-00	5	5.83	2	100	5.13

Construction:

Tube: 3/16" White FDA natural rubber.

Reinforcement: Plies of polyester tire cord with helix wire

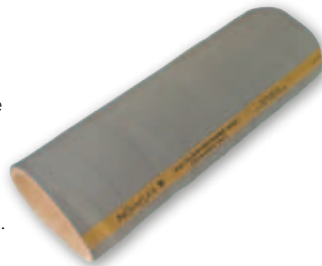
Cover: SBR corrugated grey high grade weather and abrasion resistant synthetic rubber

Length: 100 ft.

Temperature Range Up to +160°F (+71°C)

Novaflex 6201 Flour Discharge Hose (3/16" tube)

Designed for the transfer of dry edible food products such as sugar, flour, beans etc. This ultra smooth microbe resistant tube is built on special stainless steel mandrels for cleanliness.



Part No.	I.D.	O.D.	Tube Thickness	Plies	WP psi	WT LBS/FT
6201WG-03000-00	3	3.67	3/16	2	100	1.95
6201WG-04000-00	4	4.69	3/16	2	100	2.5
6201WG-05000-00	5	5.73	3/16	2	100	3.35

Construction:

Tube: White FDA natural rubber.

Reinforcement: Plies of polyester tire cord with static wire.

Cover: Grey SBR high grade weather and abrasion resistant rubber

Length: 100 ft.

Temperature Range: Up to +160°F (+41°C)

Novaflex 6284 Potable Water Discharge Hose

Used by municipalities for temporary drinking water lines when water mains burst. This ultra smooth microbe resistant tube is built on special stainless steel mandrels for cleanliness.



Construction:

Tube: White FDA neoprene rubber. (Also available in SBR tube)

Reinforcement: Plies of polyester tire cord.

Cover: Blue weather and abrasion resistant EPDM

Length: 100 ft.

Temperature Range: Up to +180°F (+82°C)

Part No.	I.D.	O.D.	Plies	WP psi	WT LBS/FT
6284WN-00750-00	¾	1.13	2	250	0.36
6284WN-01000-00	1	1.38	2	250	0.45
6284WN-01500-00	1½	1.91	2	250	0.66
6284WN-02000-00	2	2.41	2	200	0.87
6284WN-02500-00	2½	2.96	2	175	1.19
6284WN-03000-00	3	3.46	2	145	1.40
6284WN-04000-00	4	4.47	2	125	1.96

Novaflex 6285 Potable Water Suction Hose

Used by municipalities for temporary drinking water lines when water mains burst. This ultra smooth microbe resistant tube is built on special stainless steel mandrels for cleanliness.



Construction:

Tube: White FDA neoprene rubber (Also available in SBR tube)

Reinforcement: Plies of polyester tire cord with helix wire

Cover: Smooth blue weather and abrasion resistant EPDM rubber

Length: 100 ft.

Temperature Range: Up to +180°F (+82°C)

Part No.	I.D.	O.D.	Plies	WP psi	WT LBS/FT
6285WN-01000-00	1	1.41	2	250	0.57
6285WN-01500-00	1½	1.98	2	250	0.93
6285WN-02000-00	2	2.50	2	200	1.31
6285WN-02500-00	2½	3.00	2	150	1.58
6285WN-03000-00	3	3.50	2	145	1.88
6285WN-04000-00	4	4.52	2	125	2.80

Novaflex 6286 NSF NSF Potable Water Suction & Discharge Hose

200psi working pressure hose that meets NSF Standard 61 for drinking water, along with FDA requirements under 21 CFR 177.1520. This ultra smooth microbe resistant tube is built on special stainless steels mandrels for cleanliness.



Construction:

Tube: Special FDA plastic tube

Reinforcement: Multiple plies of polyester tire cord and dual helix

Cover: Blue EPDM

Temperature Range: up to 180°F (+82°C)

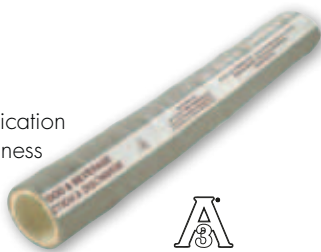
Part No.	I.D.	O.D.	Plies	MBR (in)	Vacuum Hg	WP psi	WT LBS/FT
6286CU-07500-00	¾	1.19	2	3.5	29"	200	0.58
6286CU-01000-00	1	1.47	2	4	29"	200	0.63
6286CU-01250-00	1¼	1.80	2	4.5	29"	200	0.80
6286CU-01500-00	1½	2.08	2	5	29"	200	1.06
6286CU-02000-00	2	2.58	2	8	29"	200	1.33
6286CU-02500-00	2½	3.03	2	10	29"	200	1.78
6286CU-03000-00	3	3.61	2	16	29"	200	2.12
6286CU-04000-00	4	4.61	2	24	29"	200	2.83

Novaflex 6300 Nitrile Food 150 Suction & Discharge Hose

Recommended for the food transfer application that demands both flexibility and ruggedness with a clean white FDA grade tube. Meets FDA, USDA & 3A sanitary standards Authorized #1376. The food grade nitrile tube is odorless and tasteless for those oily transfer applications. Excellent for suction and discharge applications. This ultra smooth microbe resistant tube is built on special stainless steel mandrels for cleanliness.

Construction:

Tube: FDA white nitrile
Reinforcement: Multiple plies of polyester tire cord with helix wire
Cover: Grey PVC nitrile. Length: 100ft.
Temperature Range: -40°F (-40°C) to +210°F (+99°C)
(Cleaning In Place to 248°F (+120°C) Not for continuous steam service



Part No.	I.D.	O.D.	Plies	WP psi	MBR	WT LBS/FT
6300WT-00750-00	¾	1.25	2	150	4	0.4
6300WT-01000-00	1	1.50	2	150	5	0.5
6300WT-01500-00	1½	2.00	2	150	6	0.71
6300WT-02000-00	2	2.50	2	150	7	0.95
6300WT-03000-00	3	3.52	2	150	9	1.51
6300WT-04000-00	4	4.52	2	150	12	1.98

Non-stock orders - (other color hose covers red, black, white) are available and require a 400ft minimum order per I.D.

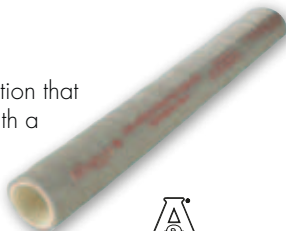
Meets or exceeds the requirement of the Canadian Food Inspection Agency (File:N267)

Novaflex 6301 Nitrile Food Discharge Hose

Recommended for the food transfer application that demands both flexibility and ruggedness with a clean white FDA grade tube. Meets FDA, USDA & 3A sanitary standards Authorized #1376. The food grade nitrile tube is odorless and tasteless for those oily transfer applications. Excellent for discharge applications. This ultra smooth microbe resistant tube is built on special stainless steel mandrels for cleanliness.

Construction:

Tube: FDA white nitrile
Reinforcement: Multiple plies of polyester tire cord
Cover: Grey PVC nitrile. Length: 100ft.
Temperature Range: -40°F (-40°C) to +210°F (+99°C)
(Cleaning In Place to 248°F (+120°C) Not for continuous steam service



Part No.	I.D.	O.D.	Plies	WP psi	MBR	WT LBS/FT
6301WT-00500-00	½	0.97	2	250	n/a	0.31
6301WT-00750-00	¾	1.21	2	250	n/a	0.41
6301WT-01000-01	1	1.59	4	250	n/a	0.64
6301WT-01500-01	1½	2.09	4	250	n/a	0.93
6301WT-02000-01	2	2.59	4	250	n/a	1.26
6301WT-03000-00	3	3.6	4	250	n/a	1.64
6301WT-03000-01	3	3.72	6	250	n/a	1.91
6301WT-04000-00	4	4.6	4	250	n/a	2.19
6301WT-04000-01	4	4.72	6	250	n/a	2.53

Non-stock orders - (other color hose covers red, black, white) are available and require a 400ft minimum order per I.D.

Meets or exceeds the requirement of the Canadian Food Inspection Agency (File:N267)

Novaflex 6303 Corrugated Nitrile Food 150 Suction & Discharge Hose

This food transfer hose is designed to provide maximum flexibility along with an abrasive resistant cover. Excellent for the transfer of oily product in full suction and discharge applications. Meets FDA, USDA & 3A sanitary standards Authorized #1376. This ultra smooth microbe resistant tube is built on special stainless steel mandrels for cleanliness.

Construction:

Tube: White FDA Nitrile
Reinforcement: Multiple plies of polyester tire cord with helix
Cover: Grey PVC Nitrile. Length: 100ft.
Temperature Range: -40°F (-40°C) to +210°F (+99°C)
(Cleaning In Place to 248°F (+120°C) Not for continuous steam service



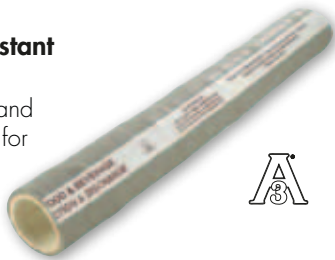
Part No.	I.D.	O.D.	Plies	WP psi	MBR	WT LBS/FT
6303WT-01500-00	1½	2.08	2	150	6	0.73
6303WT-02000-00	2	2.55	2	150	7	0.98
6303WT-03000-00	3	3.57	2	150	9	1.53
6303WT-04000-00	4	4.57	2	150	12	1.99

Non-stock orders - (other color hose covers red, black, white) are available and require a 400ft minimum order per I.D.

Meets or exceeds the requirement of the Canadian Food Inspection Agency (File:N267)

Novaflex 6309
Nitrile Food 150 Crush Resistant
Suction & Discharge Hose

Kink and crush resistant suction and discharge hose. Recommended for the food transfer application that demands both flexibility and ruggedness with a clean white FDA grade tube. Meets FDA, USDA & 3A sanitary standards Authorized #1376. The food grade nitrile tube is odorless and tasteless for those oily transfer applications. Excellent for suction and discharge applications. This ultra smooth microbe resistant tube is built on special stainless steel mandrels for cleanliness.



Construction:

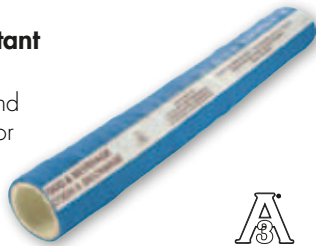
Tube: NBR/White
 Reinforcement: 2 ply fabric reinforced, and dual monofilament helix
 Cover: Grey NBR
 Length: 100ft.
 Temperature Range: -40° (-40°C) to +200°F (93°C)
 Sizes 1" through 3" are rated full vacuum. 4" is rated to 20 in/hg.
 Not for continuous steam service

Product No	ID"	OD"	Plies	Max WP (psi)	MBR	Wt LBS/Ft
6309-01000-00	1	1.66	2	150	5	.78
6309-01500-00	1.5	2.12	2	150	6	1.05
6309-02000-00	2	2.72	2	150	7	1.55
6309-02500-00	2.5	3.26	2	150	8	1.90
6309-03000-00	3	3.81	2	150	9	2.30
6309-04000-00	4	4.81	2	150	14	2.85

Meets or exceeds the requirement of the Canadian Food Inspection Agency (File:N267)

Novaflex 6310
Nitrile 250 Food Crush Resistant
Suction & Discharge Hose

Kink and crush resistant suction and discharge hose. Recommended for the food transfer application that demands both flexibility and ruggedness with a clean white FDA grade tube. Meets FDA, USDA & 3A sanitary standards Authorized #1376. The food grade nitrile tube is odorless and tasteless for those oily transfer applications. Excellent for suction and discharge applications. This ultra smooth microbe resistant tube is built on special stainless steel mandrels for cleanliness.



Construction:

Tube: NBR/White
 Reinforcement: fabric reinforced, and plastic monofilament helix
 Cover: Blue NBR
 Length: 100ft.
 Temperature Range: -40° (-40°C) to +200°F (93°C)
 Sizes 1" through 3" are rated full vacuum. 4" is rated to 20 in/hg.
 Not for continuous steam service

Product No	ID"	OD"	Plies	Max WP (psi)	MBR	Wt LBS/Ft
6310-01000-04	1	1.66	2	250	5	.78
6310-01500-04	1.5	2.14	2	250	6	1.10
6310-02000-04	2	2.88	4	250	7	1.85
6310-02500-04	2.5	3.38	4	250	13	2.25
6310-03000-04	3	3.95	4	250	16	2.90
6310-04000-04	4	4.93	4	250	20	3.30

Novaflex 6400

EPDM Food 150 Suction & Discharge Hose

Recommended for the food transfer application that demands both flexibility and ruggedness with a clean white FDA grade tube. The food grade EPDM tube is odorless and tasteless for non-oily transfer applications. Excellent for suction and discharge applications. This ultra smooth microbe resistant tube is built on special stainless steel mandrels for cleanliness.



Construction:

Tube: FDA white EPDM (non oily applications)
 Reinforcement: Multiple plies of polyester tire cord with wire helix
 Cover: Gray EPDM. Length: 100ft
 Temperature Range: -40°F (-40°C) to +225°F (+116°C)
 Not for continuous steam service

Part No.	I.D.	O.D.	Plies	WP psi	MBR	WT LBS/FT
6400WE-00750-00	¾	1.25	2	150	4	0.4
6400WE-01000-00	1	1.50	2	150	5	0.5
6400WE-01500-00	1½	2.0	2	150	6	0.71
6400WE-02000-00	2	2.50	2	150	7	0.95
6400WE-03000-00	3	3.52	2	150	12	1.51
6400WE-04000-00	4	4.52	2	150	16	1.98

Non-stock orders - (other color hose covers white, green, red, yellow, blue, orange black, purple) are available and require a 400ft minimum order per I.D.

Meets or exceeds the requirement of the Canadian Food Inspection Agency (File: N267)

Novaflex 6401

EPDM Food Discharge Hose

Recommended for the food transfer application that demands both flexibility and ruggedness with a clean white FDA grade tube. The food grade EPDM tube is odorless and tasteless for non-oily transfer applications. Excellent for discharge applications. This ultra smooth microbe resistant tube is built on special stainless steel mandrels for cleanliness.



Construction:

Tube: FDA white EPDM (non oily applications)
 Reinforcement: Multiple plies of polyester tire cord
 Cover: Gray EPDM. Length: 100ft
 Temperature Range: -40°F (-40°C) to +225°F (+116°C)
 (Cleaning In Place to 248°F (+120°C) Not for use with steam

Part No.	I.D.	O.D.	Plies	WP psi	MBR	WT LBS/FT
6401WE-00500-00	½	0.97	2	250	n/a	0.31
6401WE-00750-00	¾	1.21	2	250	n/a	0.41
6401WE-01000-01	1	1.59	4	250	n/a	0.64
6401WE-01500-01	1½	2.09	4	250	n/a	0.93
6401WE-02000-01	2	2.59	4	250	n/a	1.26
6401WE-03000-00	3	3.60	4	250	n/a	1.64
6401WE-03000-01	3	3.72	6	250	n/a	1.91
6401WE-04000-00	4	4.60	4	250	n/a	2.19
6401WE-04000-01	4	4.72	6	250	n/a	2.53

Non-stock orders - (other color hose covers white, green, red, yellow, blue, orange black, purple) are available and require a 400ft minimum order per I.D.

Meets or exceeds the requirement of the Canadian Food Inspection Agency (File:N267)

Novaflex 6403

UHMW Tube EPDM Food Suction & Discharge Hose

Recommended for special applications that require smooth tubes and easy to clean surfaces. Recommended for the food transfer application that demands flexibility and ruggedness with a clean white FDA ultra high molecular weight polyethylene grade tube. This food grade tube is odorless and tasteless for all those all purpose transfer applications. This ultra smooth microbe resistant tube is built on special stainless steel mandrels for cleanliness.



Construction:

Tube: FDA UHMW - odor and tasteless (non-oily applications)
 Reinforcement: Multiple plies of polyester tire cord with helix wire
 Cover: Gray EPDM. Length: 100ft
 Temperature Range: -40°F (-40°C) to +225°F (+116°C)
 (Cleaning In Place to 248°F (+120°C) Not for use with steam

Part No.	I.D.	O.D.	Max WP psi	Bend Radius	Vacuum HG	WT LBS/FT
6403CU-00750-00	¾	1.19	200	3.5	29"	0.58
6403CU-01000-00	1	1.44	200	3.5	29"	0.63
6403CU-01500-00	1½	2.02	200	5	29"	1.06
6403CU-02000-00	2	2.52	200	8	29"	1.33
6403CU-03000-00	3	3.55	200	12	29"	2.12
6403CU-04000-00	4	4.55	200	16	29"	2.83

Non-stock orders - (other color hose covers white, green, red, yellow, blue, orange black, purple) are available and require a 400ft minimum order per I.D.

Meets or exceeds the requirement of the Canadian Food Inspection Agency (File:N267)

Novaflex 6500 Connoisseurs Food & Beverage Suction and Discharge Hose

The connoisseur line of food hose is designed to meet the food processing industries demanding applications. Connoisseur is built in a variety of hose constructions utilizing a white chlorobutyl tube for non-oily applications that will not impart taste or odor. This microbe resistant tube is built on stainless steel mandrels for cleanliness. Meets FDA, USDA, and 3-A Sanitary Standards Authorized (#1376). Resistant to CIP solutions. This ultra smooth microbe resistant tube is built on special stainless steel mandrels for cleanliness.



Construction:

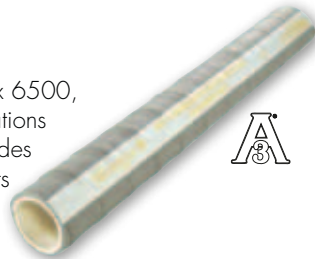
Tube: White chlorobutyl (full vacuum non oily applications)
 Reinforcement: Multiple plies of polyester tire cord with helix wire (microbe resistant)
 Cover: Gray EPDM. Length: 100 ft
 Temperature Range: -40°F (-40°C) to +240°F +116°C
 (Cleaning In Place to 248°F (+120°C) Not for continuous steam service

Part No.	I.D.	O.D.	Plies	Max WP psi	MBR	Vacuum Rating	WT LBS/FT
6500WB-00750-00	¾	1.25	2	150	4	Full	0.4
6500WB-01000-00	1	1.50	2	150	5	Full	0.5
6500WB-01500-00	1½	2.00	2	150	6	Full	0.71
6500WB-02000-00	2	2.50	2	150	7	Full	0.95
6500WB-02500-00	2½	3.02	2	150	8	Full	1.19
6500WB-03000-00	3	3.52	2	150	12	Full	1.51
6500WB-04000-00	4	4.52	2	150	16	Full	1.98

Meets or exceeds the requirement of the Canadian Food Inspection Agency (File:N267)

Novaflex 6501 Connoisseurs Discharge Hose

Same high quality hose as Novaflex 6500, designed to handle non-oily applications only. The multi-ply construction provides excellent resistance to kinking. Meets the requirements of FDA, USDA & 3-A (cert# 1803)



Construction:

Tube: White chlorobutyl (microbe resistant (non oily applications)
 Reinforcement: Multiple plies of polyester tire cord
 Cover: Gray EPDM. Length: 100 ft
 Temperature Range: -40°F (-40°C) to +240°F +116°C
 (Cleaning In Place to 248°F (+120°C) Not for continuous steam service

Part No.	I.D.	O.D.	Plies	Max WP psi	MBR	WT LBS/FT
6501WB-00500-00	½	0.97	2	250	n/a	0.31
6501WB-07500-00	¾	1.21	2	250	n/a	0.41
6501WB-01000-00	1	1.47	2	250	n/a	0.52
6501WB-01000-01	1	1.59	4	250	n/a	0.64
6501WB-01500-01	1½	2.09	4	250	n/a	0.93
6501WB-02000-01	2	2.59	4	250	n/a	1.26
6501WB-03000-00	3	3.6	4	250	n/a	1.64
6401WB-03000-01	3	3.72	6	250	n/a	1.91
6401WB-04000-00	4	4.6	4	250	n/a	2.19
6401WB-04000-01	4	4.72	6	250	n/a	2.53

Meets or exceeds the requirement of the Canadian Food Inspection Agency (File:N267)

Novaflex 6502 (new, heavier design) High Pressure, Superior Quality Brewery Discharge Hose

Novaflex 6502 special construction provides maximum flexibility for ease of handling. The special smooth chlorobutyl bacteria resistant tube designed for non-oily applications will not impart odor or taste. Meets FDA, USDA and 3-A (Cert# 1803).



Construction:

Tube: White chlorobutyl (non oily applications)
 Reinforcement: Multiple plies of polyester tire cord
 Cover: Red EPDM. Length 100 ft
 Temperature Range: -40°F (-40°C) to +240°F +116°C
 (Cleaning In Place to 248°F (+120°C) Not for continuous steam service

Part No.	I.D.	O.D.	Plies	Max WP psi	MBR	WT LBS/FT
6502WB-00750-00	¾	1.34	4	350	n/a	.59
6502WB-01000-00	1	1.68	4	350	n/a	.85
6502WB-01500-00	1½	2.23	4	350	n/a	1.25
6502WB-02000-00	2	2.87	6	350	n/a	1.89
6502WB-02500-00	2½	3.50	6	350	n/a	2.70
6502WB-03000-00	3	4.08	6	350	n/a	3.45
6502WB-04000-00	4	5.30	6	350	n/a	5.40

Meets or exceeds the requirement of the Canadian Food Inspection Agency (File:N267)

Novaflex 6505 Connoisseurs Wine Hose

Special kink and crush resistant hose, designed utilizing a multi-ply construction with dual special monofilament helix rods. 3-A certified (certificate # 1803). Meets FDA, USDA requirements. Designed to meet the demands of "cleaning in process". This ultra smooth microbe resistant tube is built for non-oily applications, on special stainless steel mandrels for cleanliness.



Construction:

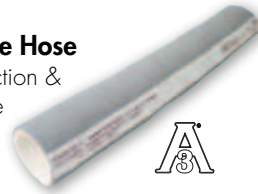
Tube: White chlorobutyl (non oily applications)
Reinforcement: Multiple plies of tire cord and dual monofilament helix
Cover: Purple EPDM. Length: 100 ft.
Temperature Range: -40°F (-40°C) to +240°F (+116°C)
(Cleaning In Place to 248°F (+120°C) Not for continuous steam service

Part No.	I.D.	O.D.	MBR (in)	VAC (Hg)	Plies	WP psi	WT LBS/FT
6505-00750-00	¾	1.26	3	Full	2	250	0.39
6505-01000-00	1	1.51	4	Full	2	250	0.48
6505-01500-00	1½	2.01	5	Full	2	250	0.68
6505-02000-00	2	2.87	7	Full	4	250	1.27
6505-02500-00	2½	3.28	13	Full	4	250	1.55
6505-03000-00	3	3.88	16	Full	4	250	1.89

Meets or exceeds the requirement of the Canadian Food Inspection Agency (File:N267)

Novaflex 6506 Connoisseurs Food & Beverage Hose

Special kink and crush resistant suction & discharge hose, designed for those more demanding applications requiring a product that meets 3-A (cert# 1803), FDA & USDA standards. Designed to meet the temperatures and chemical resistance associated with "cleaning in place" systems. This ultra smooth microbe resistant tube is built for non-oily applications, on special stainless steel mandrels for cleanliness.



Construction:

Tube: White Chlorobutyl (non oily applications)
Reinforcement: Multiple plies of polyester tire cord & dual monofilament helix
Cover: Gray EPDM abrasion resistant. Length: 100 ft
Temperature Range: -40°F (-40°C) to +240°F (+116°C)
(Cleaning In Place to 248°F (+120°C) Not for continuous steam service

Part No.	I.D.	O.D.	MBR (in)	VAC (Hg)	Plies	WP psi	WT LBS/FT
6506-00750-00	¾	1.26	3.0	Full	2	250	0.33
6506-01000-00	1	1.51	3.5	Full	2	250	0.44
6506-01500-00	1½	2.01	4.5	Full	2	250	0.63
6506-02000-00	2	2.87	7.0	Full	4	250	1.21
6506-02500-00	2½	3.28	13.0	Full	4	250	1.52
6506-03000-00	3	3.88	16.0	Full	4	250	1.84

Meets or exceeds the requirement of the Canadian Food Inspection Agency (File:N267)

Novaflex 6507NB NovaBrew

NovaBrew is a state of the art designed hose based on the specific requirements of the modern day brewery. NovaBrew has a rugged but flexible construction with a super smooth white hose tube for non-oily applications, that is microbe resistant along with a dark burgundy red cover that resists dirt scuffs and is easily cleaned. NovaBrew is built on stainless steel mandrels for cleanliness and meets FDA USDA and 3-A (certificate # 1376).



Construction:

Tube: White chlorobutyl (non oily applications)
Reinforcement: Multiple plies of polyester tire cord, dual monofilament helix rods
Cover: Dark burgundy EPDM. Length: 100ft
Temperature Range: -40°F (-40°C) to +240°F (+116°C)
(Can be open end steam cleaned) CIP to 248°F (+120°C)

Part No.	I.D.	O.D.	WP psi	MBR	Vacuum Hg	WT LBS/FT
6507NB-07500-00	¾	1.25	250	4	Full	0.33
6507NB-01000-00	1	1.50	250	4	Full	0.48
6507NB-01500-00	1½	2.00	250	5	Full	0.65
6507NB-02000-00	2	2.90	250	7	Full	1.26
6507NB-02500-00	2½	3.28	250	13	Full	1.54
6507NB-03000-00	3	3.90	250	18	Full	1.88