

NOVAFLEX[®]
PROVIDING HOSE & DUCT SOLUTIONS



Sweeper & Vacuum Truck Hoses

DEBRIS COLLECTION/ BOOM HOSE

Novaflex™ 5010WG Sludge Slayer™ Hose 5/16" Gum Hose

Heavy duty material handling hose designed for portable and central industrial vacuum equipment as well as truck mount applications.

The 5/16" abrasion resistant tube is designed to resist cutting, tearing and wear from abrasive media. The heavy helix wire is designed to resist kinking and crushing as well as handle full vacuum.

Construction:

Tube: 5/16" White natural rubber

Reinforcement: Plies of fabric with helix wire

Cover: Green corrugated

Length: 50ft

Temperature Range: -40°F (-40°C) to +160°F (+71°C)



| I.D." | O.D." | Part No. | MBR" | Vac Hg | Wt lbs/ft. |
|-------|-------|-----------------|------|--------|------------|
| 2½ | 3.61 | 5010WG-02500-56 | 10 | 29 | 3.29 |
| 3 | 3.11 | 5010WG-03000-56 | 12 | 29 | 3.85 |
| 4 | 5.12 | 5010WG-04000-56 | 16 | 29 | 5.12 |
| 6 | 6.95 | 5010WG-06000-56 | 24 | 29 | 6.05 |
| 8 | 9.05 | 5010WG-08000-56 | 36 | 29 | 8.45 |

Novaflex™ 5011 Vacuum Boom or Port Hose

Heavy duty corrugated vacuum hose. Corrugated outer cover for easy of handling. Designed for full vacuum boom applications. Smooth inner tube for enhanced material flow.

Abrasion resistant tube for extended wear.

Construction:

Tube: 3/16" Tan abrasion resistant rubber

Reinforcement: Plies of fabric with helix wire

Cover: Black corrugated

Length: 50ft

Temperature Range: -40°F (-40°C) to +160°F (+71°C)



| I.D." | O.D." | Part No. | MBR" | Vac Hg | Wt lbs/ft. |
|-------|-------|-----------------|------|--------|------------|
| 2½ | 3.36 | 5011TG-02500-56 | 9 | 29 | 2.90 |
| 3 | 2.86 | 5011TG-03000-56 | 11 | 29 | 3.40 |
| 4 | 4.87 | 5011TG-04000-56 | 15 | 29 | 4.60 |
| 6 | 6.70 | 5011TG-06000-56 | 22 | 29 | 5.30 |
| 8 | 8.80 | 5011TG-08000-56 | 30 | 29 | 7.20 |

DEBRIS COLLECTION/ BOOM HOSE

Nova-Vac™ 5049BG Boom Hose

Designed to meet O.E.M.'s specifications for serviceability and more flexible than Novaflex™ 5010. This flexible full vacuum hose has an abrasion resistant smooth tube with 4" soft cuffs on each end for easy installation.

Construction:

Tube: Black smooth abrasion resistant rubber
Reinforcement: Helix wire and textile
Cover: Black abrasion resistant rubber
Length: Standard lengths and made to order
Temperature: -40°F (-40°C) to +160°F (+71°C)



| I.D." | Length" | Part No. | Vacuum |
|-------|---------|---------------------|--------|
| 6 | 103 | 5049BG-06000-00-103 | 29 Hg |
| 6 | 240 | 5049BG-06000-00-240 | 29 Hg |
| 8 | 103 | 5049BG-08000-00-103 | 29 Hg |
| 8 | 120 | 5049BG-08000-00-120 | 29 Hg |
| 8 | 127 | 5049BG-08000-00-127 | 29 Hg |
| 8 | 240 | 5049BG-08000-00-240 | 29 Hg |

Nova-Vac™ 5050RG High Abrasion Boom Hose

Designed to provide extra service life in heavy wear applications. A flexible, full vacuum hose. In addition to the same construction as Nova-Vac™ 5049BC is a very high abrasion resistant, smooth red tube and 4" cuffs on each end for easy installation.

Construction:

Tube: Red smooth abrasion resistant rubber
Reinforcement: Helix wire and textile
Cover: Black abrasion resistant rubber
Length: Standard lengths and made to order
Temperature: -40°F (-40°C) to +160°F (+71°C)



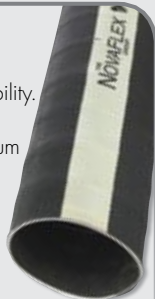
| I.D." | Length" | Part No. | Vacuum |
|-------|---------|---------------------|--------|
| 6 | 103 | 5050RG-06000-00-103 | 29 Hg |
| 6 | 240 | 5050RG-06000-00-240 | 29 Hg |
| 8 | 60 | 5050RG-08000-00-60 | 29 Hg |
| 8 | 103 | 5050RG-08000-00-103 | 29 Hg |
| 8 | 120 | 5050RG-08000-00-120 | 29 Hg |
| 8 | 127 | 5050RG-08000-00-127 | 29 Hg |
| 8 | 240 | 5050RG-08000-00-240 | 29 Hg |

Nova-Vac™ 5052BG Straight Connector Sleeve

Designed to meet O.E.M.'s specifications for serviceability. This abrasion resistant smooth tube and full vacuum sleeve is used to connect different size piping on vacuum truck applications for sound dampening and vibration elimination.

Construction:

Tube: Black smooth abrasion resistant rubber
Reinforcement: Helix wire and textile
Cover: Black abrasion resistant rubber
Length: Standard lengths and made to order
Temperature: -40°F (-40°C) to +160°F (+71°C)



| I.D." | Length" | Part No. | Vacuum |
|-------|---------|---------------------|--------|
| 6 | 10 | 5052BG-08000-98-010 | 29Hg |
| 8 | 10 | 5052BG-09625-98-010 | 29Hg |
| 10 | 10 | 5052BG-10000-98-010 | 29Hg |

Nova-Vac™ 5053BG Tapered Connector Sleeve

Designed to meet O.E.M.'s specifications for serviceability. This abrasion resistant smooth tube with full vacuum tapered sleeve is used to connect different size piping on vacuum truck applications for sound dampening and vibration elimination.

Construction:

Tube: Black smooth abrasion resistant rubber
Reinforcement: Helix wire and textile
Cover: Black abrasion resistant rubber
Length: Standard lengths and made to order
Temperature: -40°F (-40°C) to +160°F (+71°C)



| I.D." | Length" | Part No. | Vacuum |
|------------|---------|---------------------|--------|
| 8 x 10 | 10 | 5053BG-08000-98-010 | 29Hg |
| 9 5/8 x 12 | 10 | 5053BG-09625-98-010 | 29Hg |
| 10 x 12 | 10 | 5053BG-10000-98-010 | 29Hg |

Nova-Vac™ 5055BG Boom Connector Hose

Designed to meet O.E.M.'s specifications for serviceability. This abrasion resistant smooth tube, full vacuum tapered sleeve is used to connect different size piping on vacuum truck applications for sound dampening and vibration elimination.

Construction:

Tube: Black smooth abrasion resistant rubber
Reinforcement: Helix wire and textile
Cover: Black abrasion resistant rubber
Length: Standard lengths and made to order
Temperature: -40°F (-40°C) to +160°F (+71°C)



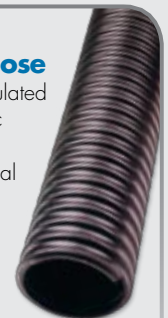
| I.D." | Length" | Part No. |
|-------|---------|---------------------|
| 8 | 60 | 5055BG-08000-00-060 |
| 8 | 62 | 5055BG-08000-00-062 |
| 8 | 66 | 5055BG-08000-00-66 |
| 8 | 72 | 5055BG-08000-00-72 |

Novaflex™ HDAP All Purpose Thermoplastic Rubber Hose

Heavy duty thermoplastic inner tube with fully encapsulated plastic, external wear strip. All extruded thermo plastic heavy wall hose. Designed for medium duty material handling where flexibility is paramount. Good chemical and temperature resistance with smooth interior for superior product flow.

Construction:

Material: Thermoplastic rubber
Diameters: 2" to 8"
Weight: 3" = 1.4 lbs/ft
Length: Diameters 2" to 4", 100ft lengths; Diameters 5" to 8", 50ft lengths
Temperature range: -65°F (-54°C) to +160°F (+71°C)



| I.D." | O.D." | Part No. | WP(psi) | Vacuum | Bend Radius | Wt./Ft. |
|-------|-------|-----------|---------|--------|-------------|---------|
| 2 | 2.77 | 9SFHDAPO2 | 40 | 29Hg | 2 | 0.97 |
| 4 | 4.67 | 9SFHDAPO4 | 30 | 29Hg | 5 | 1.70 |
| 6 | 6.85 | 9SFHDAPO6 | 30 | 29Hg | 10 | 1.90 |
| 8 | 8.99 | 9SFHDAPO8 | 30 | 29Hg | 15 | 3.80 |

LEAF & DEBRIS / COLLECTION HOSE

Novaflex™ SF-TPUW .060^{thou} wall Urethane Sweeper Hose

An economical alternative to cumbersome rubber hose. Polyurethane wall for superior abrasion resistance. UV stabilized for outdoor use. Lightweight, good flexibility and smooth interior for optimum flow. Encapsulated wire helix.

Applications:

Leaf collection equipment
Medium duty material handling
Plant debris collection

Construction:

Material: 0.060" translucent blue urethane, encapsulated wire

Diameters: 6" to 18"

Weight: 6"= 1.4 lbs/ft, 8"= 1.9 lbs/ft

Lengths: 25 ft & 50 ft to 8", 25 ft to 10" diameters and up

Compression Ratio: 2:1

Temperature range: -65°F (-54°C) to +200°F (+93°C)

Colour: Blue with blue wear strip. Also available in black & clear; minimum quantity required.

*Available in 0.045" gauge, clear 8" to 14" diameter.



| I.D." | Length | Part No. | Wall | Vacuum |
|-------|---------------|---------------|------|--------|
| 6 | 25', 50' | 9SFTPUW06HW60 | 0.06 | 23 Hg |
| 8 | 25', 50' | 9SFTPUW08HW60 | 0.06 | 13 Hg |
| 10 | 25' | 9SFTPUW10HW60 | 0.06 | 6 Hg |
| 14 | 25' | 9SFTPUW14HW60 | 0.06 | 5 Hg |
| 16 | 10', 12', 25' | 9SFTPUW16HW60 | 0.06 | 2 Hg |
| 18 | 10', 12', 25' | 9SFTPUW18HW60 | 0.06 | 1 Hg |

Novaflex™ has been pioneering innovative ways to make ducting and hose more versatile, dependable and competitively priced for over 30 years.

Our patented duct manufacturing technique, utilizing "mechanical lock construction", allows us to produce specialized products not available from other sources. This process combines unmatched product integrity and durability with the flexibility to quickly meet custom orders, large or small. Unlike conventional methods using adhesives, our process requires no curing and is more resistant to temperature and environmental extremes. The outside metal helix also contributes to duct strength, durability and scuff-resistance. Coupled with our complete line of extruded thermoplastic ducts and rubber hoses, Novaflex offers the widest selection of individual products in the industry.

For proper care and maintenance please see "Novaflex Care and Maintenance Guide form no 2003-1 [See: www.novaflex.com]. Always err on the side of safety. Remove a hose from service if there is any doubt about its serviceability.

In order to ground hose, connect helix wire to fittings that have an earthed connection.

All hose and duct manufactured by Novaflex are warranted to be free from all defects in material and workmanship. It is impossible to test Novaflex hose and duct under all conditions to which they might be subjected in the field. It is therefore the buyer and/or end users' responsibility to test all Novaflex hose and duct under conditions that duplicate the service conditions prior to installation.

Shipping Terms: F.O.B. Our warehouses.

Due to continuous improvements, all specifications are subject to change without notice.

Nova-Vac™ 5063BG Leaf / Debris Hose

Designed to meet O.E.M.'s specifications for serviceability. This highly flexible, internally and externally corrugated vacuum hose has a high abrasion resistant rubber tube with 4" soft cuffs on each end for easy installation.

Construction:

Tube: Black corrugated abrasion resistant rubber

Reinforcement: Helix wire and textile

Cover: Black corrugated abrasion resistant rubber

Temperature range: -40°C (-40°C) to 160°F

(+71°C)



| I.D." | Length | Part No. | Vacuum |
|-------|--------|---------------------|--------|
| 12 | 48 | 5063BG-12000-00-048 | 4 Hg |
| 12 | 100 | 5063BG-12000-00-100 | 4 Hg |
| 12 | 120 | 5063BG-12000-00-120 | 4 Hg |
| 12 | 144 | 5063BG-12000-00-144 | 4 Hg |
| 14 | 48 | 5063BG-14000-00-048 | 4 Hg |
| 14 | 100 | 5063BG-14000-00-100 | 4 Hg |
| 14 | 120 | 5063BG-14000-00-120 | 4 Hg |
| 14 | 144 | 5063BG-14000-00-144 | 4 Hg |
| 16 | 48 | 5063BG-16000-00-048 | 4 Hg |
| 16 | 100 | 5063BG-16000-00-100 | 4 Hg |
| 16 | 120 | 5063BG-16000-00-120 | 4 Hg |
| 16 | 144 | 5063BG-16000-00-144 | 4 Hg |
| 18 | 120 | 5063BG-18000-00-120 | 4 Hg |

Novaflex™ SF-TPU .045^{thou} wall Urethane Leaf Collector Hose

An economical alternative to cumbersome rubber hose. Polyurethane wall for superior abrasion resistance. UV stabilized for outdoor use. Lightweight, good flexibility, smooth interior for optimum flow. Encapsulated wire helix.

Applications:

Leaf collection equipment
Medium duty material handling
Plant debris collection

Construction:

Material: 0.045" translucent blue urethane, encapsulated wire

Diameters: 2" to 18"

Weight: 6"= 1.4 lbs/ft, 8"= 1.9 lbs/ft

Lengths: 25 ft & 50 ft to 8", 25 ft to 10" diameters and up

Compression Ratio: 2:1

Temperature range: -65°F (-54°C) to +200°F (+93°C)

Colour: Blue with blue wear strip.

Also available in black & clear; minimum quantity required.

*Available in 0.060" gauge clear 8" to 14" diameter.



| I.D." | Length | Part No. | Wall | Vacuum |
|-------|---------------|-------------|-------|--------|
| 6 | 25', 50' | 9SFTPUW06HW | 0.045 | 23 Hg |
| 8 | 25', 50' | 9SFTPUW08HW | 0.045 | 13 Hg |
| 10 | 25' | 9SFTPUW10HW | 0.045 | 6 Hg |
| 14 | 25' | 9SFTPUW14HW | 0.045 | 5 Hg |
| 16 | 10', 12', 25' | 9SFTPUW16HW | 0.045 | 2 Hg |
| 18 | 10', 12', 25' | 9SFTPUW18HW | 0.045 | 1 Hg |



STREET SWEEPING HOSE

Nova-Vac™ 5060 Street Sweeper Hose

Designed to meet O.E.M.'s specifications for serviceability. This highly flexible, internally and externally corrugated vacuum hose has an abrasion resistant rubber tube with 4" integral cuffs on each end for ease of installation. Ultra flexible and compressible construction to accommodate sweeper vacuum movements. Used for under truck installation.

Construction:

Tube: Black abrasion resistant rubber
Reinforcement: Helix wire with plies of fabric
Cover: Black corrugated
Temperature range: -40°F (-40°C) to 160°F (+72°C)



| I.D." | Length | Part No. | Vacuum |
|-------|--------|---------------------|--------|
| 8 | 20" | 5060BG-08000-80-020 | 12 Hg |
| 8 | 24" | 5060BG-08000-80-024 | 12 Hg |
| 8 | 26" | 5060BG-08000-80-026 | 12 Hg |
| 10 | 20" | 5060BG-10000-80-020 | 6 Hg |
| 10 | 24" | 5060BG-10000-80-024 | 6 Hg |
| 10 | 26" | 5060BG-10000-80-026 | 6 Hg |
| 13 | 42" | 5060BG-13000-80-042 | 4 Hg |
| 13 | 55" | 5060BG13000-80-055 | 4 Hg |
| 13 | 64" | 5060BG-13000-80-064 | 4 Hg |
| 14 | 26" | 5060BG-14000-80-026 | 4 Hg |
| 14 | 30" | 5060BG-14000-80-030 | 4 Hg |

Novaflex™ 5061RG Street Sweeper Hose

Designed with a red high abrasion resistant tube. This highly flexible, internally and externally corrugated vacuum hose has the same performance characteristics as Novaflex 5060BG but with an enhanced wear resistant tube.

Construction:

Tube: Red abrasion resistant rubber
Reinforcement: Helix wire with plies of fabric
Cover: Black corrugated
Temperature range: -40°F (-40°C) to 160°F (+72°C)



| I.D." | Length | Part No. |
|-------|--------|---------------------|
| 8 | 20" | 5061RG-08000-80-020 |
| 8 | 24" | 5061RG-08000-80-024 |
| 8 | 26" | 5061RG-08000-80-026 |
| 10 | 20" | 5061RG-10000-80-020 |
| 10 | 24" | 5061RG-10000-80-024 |
| 10 | 26" | 5061RG-10000-80-026 |
| 13 | 42" | 5061RG-13000-80-042 |
| 13 | 55" | 5061RG13000-80-055 |
| 13 | 64" | 5061RG-13000-80-064 |
| 14 | 26" | 5061RG-14000-80-026 |
| 14 | 30" | 5061RG-14000-80-030 |

Novaflex™ Hoses are suitable on **OEM equipment**

| | |
|------------------|----------------|
| Vac-Con | Badger |
| Vac-Tron | Camel |
| Schwarze | Hydrovac |
| Industries | Vactor |
| Keith Huber | Hi-Vac |
| SuperSucker | Elgin Sweepers |
| Tymco | Old Dominion |
| GapVax | Brush |
| Vac-All | Supervac |
| Johnson Sweepers | |



VAC TRUCK / ACCESSORY HOSES

Nova-Green™ Urethane Hose

A lightweight urethane alternative to cumbersome PVC hose. Designed specifically for the landscaping market. Nova-Green all urethane tube provides superior abrasion resistance and excellent flexibility. The hose features a smooth interior with a uniform .045" wall gauge for even abrasion resistance throughout. The exposed rigid helix allows the hose to drag easily across surfaces when the hose is fully charged while providing protection to the hose wall.

Applications:

Hydro-Seeding
Terra-seeding
Bark Blowing
Mulch Blowing

Construction:

Material: UV stabilized urethane wall, rigid plastic helix
Diameters: 2" to 6"
Lengths: 50ft and 100ft lengths
Temperature range: -50°F (-45°C) to 200°F (+93°C)
Color: Clear wall with green helix



| I.D." | Length | Part No. | Vacuum |
|-------|-----------|----------------|--------|
| 2 | 50', 100' | 9NFNOVAGREEN02 | 30 Hg |
| 3 | 50', 100' | 9NFNOVAGREEN03 | 30 Hg |
| 4 | 50', 100' | 9NFNOVAGREEN04 | 30 Hg |
| 6 | 100' | 9NFNOVAGREEN06 | 23 Hg |

Novaflex™ AGRI Medium Duty Thermoplastic Hose

Featuring a low profile outer helix that is easy to clamp and won't snag on corners. Chemical resistant inner tube with a molecularly bonded external wear strip for maximum durability. Smooth interior for optimum product flow. Full vacuum to 4" diameters.

Applications:

Medium Duty Material Handling
Construction Dewatering
Liquid Waste
Septic handling and cesspool cleaning
Agricultural Fertilizers

Construction:

Material: Thermoplastic rubber with polypropylene helix
Diameters: 1" to 6"
Lengths: 1" to 4" 100ft, 6" up to 60ft
Color: Black with green wear strip
Temperature range: -60° (-51°C) to +225°F (107°C)



| I.D." | Part No. | MBR™ | WPSI @72°F | Vac Rating 72°F In./Hg | Wt lbs/ft. |
|-------|-------------|------|------------|------------------------|------------|
| 1 | 9SFAGR01 | 2.0 | 50 | 29 | 0.30 |
| 1.25 | 9SFAGR01.04 | 3.0 | 50 | 29 | 0.47 |
| 1.5 | 9SFAGR01.08 | 3.0 | 50 | 29 | 0.50 |
| 2 | 9SFAGR02 | 4.5 | 50 | 29 | 0.71 |
| 2.5 | 9SFAGR02.08 | 5.0 | 50 | 29 | 0.82 |
| 3 | 9SFAGR03 | 7.5 | 45 | 29 | 1.20 |
| 4 | 9SFAGR04 | 11.0 | 40 | 29 | 1.40 |
| 6 | 9SFAGR06 | 21.0 | 25 | 28 | 2.09 |

Yellow Jack™ Pumper Sanitation Hose

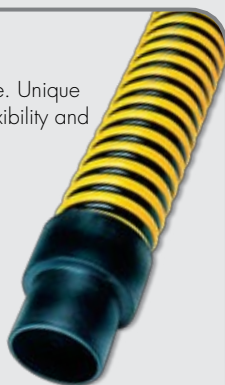
All extruded heavy wall sanitation suction hose. Unique interlock construction provides for extreme flexibility and kink resistance.

Applications:

Liquid transfer – sanitary and cesspool
Machine and tank liquid transfer
Utility suction operations

Construction:

Material: Eva/Polyethylene copolymer
Diameters: 1.5", 2", 2.5", 3" and 4"
Bend radius: 2" = 3.75"
Weight: 2" = .6 lbs/ft
Lengths: 1½" to 3" diameters: 10ft, 20ft, 25ft, 30ft, 50ft, 60ft. lengths 4" diameter: 10ft, 20ft, 25ft
Temperature range: -40°F (-40°C) to +140°F (+60°C)
Colour: Yellow and Black
Available with factory installed cuffs or in bulk lengths



| I.D." | Length | Part No. | Vacuum |
|-------|----------|--------------|--------|
| 1½ | 25', 50' | 9NFYLJK01.08 | 16 Hg |
| 2 | 25', 50' | 9NFYLJK02 | 6 Hg |
| 3 | 25' | 9NFYLJK03 | 5 Hg |
| 4 | 25' | 9NFYLJK04 | 4.5 Hg |



VAC TRUCK / ACCESSORY HOSES

Spiral Clamps

For use on corrugated hose covers. Viewing the end of the hose determines whether the spiral is in a clockwise or counter clockwise direction. Clockwise spirals requires a *right hand clamp*, counter clockwise requires a *left hand clamp*.



| I.D." | Hose O.D. Range | Right Hand Spiral Clamp Part No. | Left Hand Spiral Clamp Part No. |
|-------|-----------------|----------------------------------|---------------------------------|
| 6 | 6.25 to 7" | SC600 | SCC600 |
| 8 | 8.5 to 9.25" | SC800 | SCC800 |
| 10 | 10.62 to 11.25" | SC1000 | SCC1000 |

Bridge Clamps

For use on Novaflex ducting. The bridge clamp has a formed spacer designed to fit over the helix wire on Novaflex, U-Lok and plastic ducts.



| I.D." | Clamp Part No. |
|-------|----------------|
| 6 | 3BLAMP06 |
| 8 | 3BLAMP08 |
| 10 | 3BLAMP10 |
| 12 | 3BLAMP12 |
| 14 | 3BLAMP14 |
| 16 | 3BLAMP16 |
| 18 | 3BLAMP18 |
| 20 | 3BLAMP20 |

Double Bolt Clamps

A heavy duty clamp for the most rugged applications.



| I.D." | Hose O.D. Range | Part No. |
|-------|-----------------|----------|
| 6 | 6.5" to 7.56" | 769 |
| 8 | 8.25" to 8.87" | 875 |
| 10 | 10" to 11.3" | 1125 |
| 12 | 12.25" to 14" | 1360 |
| 14 | 14" to 16" | 1450 |
| 16 | 16" to 17.25" | 1700 |

T-Bolt Clamps

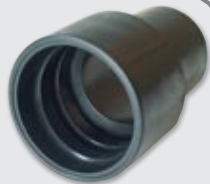
For use on smooth cover hoses. Spiral Clamps; Stainless Steel.



| I.D." | Hose O.D. Range | Part No. |
|-------|-----------------|-----------|
| 6 | 6.3 to 6.87" | STBC675L |
| 8 | 8.45 to 9" | STBC888L |
| 10 | 10.43 to 11" | STBC1088L |
| 12 | 12.43 to 13" | STBC1288L |
| 14 | 14.43 to 15" | STBC1488L |
| 16 | 16.43 to 17" | STBC1688L |

Yellow Jack™ Threaded Cuffs

Threaded cuffs for use with Yellow Jack Pumper Sanitation Hose, and for use with Cam-lock couplings.



| I.D." | Part No. |
|-------|-----------------|
| 2 | OYJCUFFTHREAD02 |
| 3 | OYJCUFFTHREAD03 |

Aluminum Cam-Lok Couplings

Cam-lok couplings for use with Yellow Jack Pumper Sanitation Hose, and other hoses that can use aluminum quick connect couplings.



Part C Part E

| I.D." | Part C / Part No. | Part E / Part No. |
|-------|-------------------|-------------------|
| 1½ | OUCPARTCA-0150 | OUCPARTCEA-0150 |
| 2 | OUCPARTCA-0200 | OUCPARTCEA-0200 |
| 3 | OUCPARTCA-0300 | OUCPARTCEA-0300 |
| 4 | OUCPARTCA-0400 | OUCPARTCEA-0400 |



Nova-Green™ Hose for Hydro-Seeding, Terra Seeding Bark and Mulch Blowing

This lightweight urethane alternative to cumbersome PVC hose is designed specifically for the landscaping market. Novaflex 's Nova-Green™ all urethane tube provides superior abrasion resistance and excellent flexibility.

Canada

WHITBY, ONTARIO

Tel 905.666.4970

Fax 905.666.9388

OTTAWA, ONTARIO

Tel 613.744.7360

Fax 613.744.7366

CALGARY, ALBERTA

Tel 403.277.3115

Fax 403.276.1309

DELTA, BRITISH COLUMBIA

Tel 604.940.6401

Fax 604.940.6402

MONTREAL, QUEBEC

Tel 514.697.3701

Fax 514.697.3767

RICHMOND HILL, ONTARIO

Tel 905.731.9411

Fax 905.731.7086

U.S.A.

HAW RIVER, NORTH CAROLINA

Tel 336.578.2161

Fax 336.578.5554

Toll Free 800.334.4270

INDIANAPOLIS, INDIANA

Tel 317.334.1444

Fax 317.334.1535

Toll Free 800.526.6288

WEST BERLIN, NEW JERSEY

Tel 856.768.2275

Fax 856.768.2385

Toll Free 800.225.0215

U.K.

BROMBOROUGH, WIRRAL, U.K.

Tel 44.0151.334.0873

Fax 44.0151.334.7145

Email: sales@novaflex.co.uk