

Material Handling Hose

Novaflex 5000 Slurry King Hose Pure Gum Liner

Tough, versatile alternative to inflexible, cumbersome steel tubing. The easy handling and reusable quick-fastening flange system make installation a snap. Absorbs system vibration and saves wear on equipment. Compensates for thermal expansion and contraction, reduces noise. Flexible connection for hard piping misalignment. Can be cut on site for immediate installation. No welding necessary. Available with many inner tube compounds to meet specific material handling needs.

Construction:

Tube: Abrasion, red abrasion, black natural or pure gum

Reinforcement: Fabric and helix wire

Cover: Ozone and ultra violet resistant

Temperature Range: -40°F (-40°C) to +160°F (+71°C)
(depending on compound)

Length: 60 ft. Available in a variety of tube gauges ranging from: 1/8", 3/16", 1/4", 5/16", 3/8", 1/2"



Part No.	I.D.	O.D.	LINING THICKNESS (in)	MBR (in)	MAX PROD LENGTH (ft)	WP psi	WT LBS/FT
5000PG-02000-00	2	3.00	3/16	12	100	150	2.0
5000PG-03000-00	3	4.50	3/8	14	100	150	4.0
5000PG-04000-00	4	5.25	3/8	20	100	150	5.4
5000PG-05000-00	5	6.45	3/8	26	60	150	8.0
5000PG-06000-00	6	7.50	3/8	36	60	150	9.4
5000PG-08000-00	8	9.50	3/8	54	40	150	12.1
5000PG-10000-00	10	11.50	3/8	66	40	150	14.8
5000PG-12000-00	12	13.75	3/8	78	40	150	18.8
5000PG-14000-00	14	16.00	3/8	98	40	150	26.0

Optimum bend radius for maximum service life is 10 times the hose ID
Flanges Available

Novaflex 5000* Slurry King Hose Yellow Abrasion Liner

Available with a variety of tube compounds including, black abrasion, red abrasion, black natural and pure gum for abrasion, oil, heat and corrosion resistance depending on applications.

Novaflex 5000RG - Red Gum for added abrasion resistance

Novaflex 5000YG - Yellow Novaware tube
superior abrasion resistance

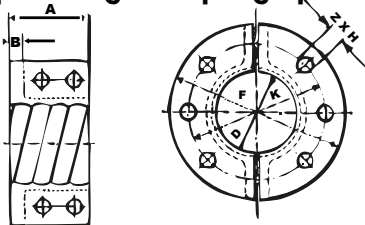


Part No.	I.D.	O.D.	LINING THICKNESS (in)	MBR (in)	MAX PROD LENGTH (ft)	WP psi	WT LBS/FT
5000XX-02000-00	2	3.00	3/16	12	100	150	2.0
5000XX-03000-00	3	4.50	3/8	14	100	150	4.0
5000XX-04000-00	4	5.25	3/8	20	100	150	5.4
5000XX-05000-00	5	6.45	3/8	26	60	150	8.0
5000XX-06000-00	6	7.50	3/8	36	60	150	9.4
5000XX-08000-00	8	9.50	3/8	54	40	150	12.1
5000XX-10000-00	10	11.50	3/8	66	40	150	14.8
5000XX-12000-00	12	13.75	3/8	78	40	150	18.8
5000XX-14000-00	14	16.00	3/8	98	40	150	26.0

Flanges Available

XX= tube compound

Split Flange Coupling Specifications



Novaflex Slurry King Gaskets



Part No.	ID
7SKFGASK02	2
7SKFGASK03	3
7SKFGASK04	4
7SKFGASK05	5
7SKFGASK06	6
7SKFGASK08	8
7SKFGASK10	10
7SKFGASK12	12
7SKFGASK14	14

'D' I.D. Inches	'A' Inches	'B' Inches	'K' Inches	'P' Inches	'Z' Inches	'H' Inches	Approx/ WT/LBS
2	311/32	5/8	4 3/4	6	4	3/4	3.30
2 1/2	35/16	5/8	5 1/2	7	4	3/4	4.40
3	35/16	5/8	6	7 1/2	4	3/4	4.40
4	35/16	5/8	7 1/2	9	8	3/4	6.60
4 1/2	4 1/8	5/8	8 1/2	10	8	7/8	7.70
5	4 1/8	5/8	8 1/2	10	8	7/8	7.70
6	4 1/2	1/16	9 1/2	11	8	7/8	8.80
8	5 7/8	3/4	11 3/4	13 1/2	8	7/8	13.20
10	6 7/8	1 1/8	14 1/4	16	12	1	25.40
12	7 11/16	1 1/8	17	19	12	1	30.90
14	7 11/16	1 1/8	18 3/4	21	12	1 1/8	35.30

Novaflex 5010 Sludge Slayer ⁵/₁₆" White Gum Tube

Heavy duty material handling hose designed for portable and central industrial vacuum equipment as well as truck mount applications. The ⁵/₁₆" abrasion resistant tube is designed to resist cutting, tearing and wear from abrasive media. The heavy helix wire is designed to resist kinking and crushing as well as handle full vacuum. (Ground using helix wire to make static conductive.)



Construction:

Tube: ⁵/₁₆" white gum
Reinforcement: Plies of fabric with helix wire
Cover: Green Corrugated Length: 50 ft.
Temperature Range: -40°F (-40°) to +160°F (+71°C)

Part No	ID	OD	MBR (in)	VAC (Hg)	WT LBS/FT
5010WG-02500-56	2½	3.61	15	29	3.29
5010WG-03000-56	3	4.11	18	29	3.85
5010WG-04000-56	4	5.12	24	29	5.12
5010WG-06000-56	6	6.95	36	29	6.05
5010WG-08000-56	8	9.05	48	29	8.45

Novaflex 5010YG = Yellow Novaware ¹/₄" tube
superior abrasion resistance

Novaflex 5015 Material Handling Hose ¹/₈" Gum Tube

Lightweight material handling hose designed for portable and central industrial vacuum equipment. The ¹/₈" abrasion resistant tube is ideal for conveying light materials by gravity flow or at low working pressures. (Ground using helix wire to make static conductive.)



Construction:

Tube: ¹/₈" Tan gum
Reinforcement: Plies of fabric with helix wire
Cover: SBR Black Corrugated
Length: 50 ft. Ends: Plain or soft cuffs
Temperature Range: -40°F (-40°) to +160°F (+71°C)

Part No.	I.D.	O.D.	MBR (in)	VAC (Hg)	WT LBS/FT
5015-02500-00	2½	3.13	5"	29"	1.1
5015-03000-00	3	3.63	8"	29"	1.4
5015-04000-00	4	4.63	11"	29"	2.0
5015-06000-00	6	6.63	18"	29"	3.0
5015-08000-00	8	8.63	24"	17"	5.3
5015-10000-00	10	10.63	30"	9"	7.0
5015-12000-00	12	12.63	36"	9"	9.0

Novaflex 5016 (Vacuum Only) Material Handling Hose ¹/₄" Gum Tube

Heavy duty material handling hose designed for portable and central industrial vacuum equipment as well as truck mount applications. The ¹/₄" abrasion resistant tube is designed to resist cutting, tearing and wear from abrasive media. The heavy helix wire is designed to resist kinking and crushing as well as handle full vacuum. (Ground using helix wire to make static conductive.)



Construction:

Tube: ¹/₄" Tan gum
Reinforcement: Plies of fabric with helix wire
Cover: SBR Black Corrugated
Length: 50 ft. Ends: Plain or soft cuffs
Temperature Range: -40°F (-40°) to +160°F (+71°C)

Part No.	I.D.	O.D.	MBR (in)	VAC (Hg)	WT LBS/FT
5016-02500-00	2½	3.38	5	29"	2.0
5016-03000-00	3	3.88	8	29"	2.2
5016-04000-00	4	4.88	11	29"	3.0
5016-06000-00	6	6.88	18	29"	4.1
5016-08000-00	8	8.88	24	17"	7.2
5016-10000-00	10	10.88	30	9"	9.0
5016-12000-00	12	12.88	36	9"	11.4

Novaflex 5016YG = Yellow Novaware tube
superior abrasion resistance

Material Handling Hose

Novaflex 5017 Bulk Material Transfer Hose

Novaflex 5017TG is the 150 psi working pressure rated version of Novaflex 5016TG. This ¼" Tan Gum rubber tube is produced with a high abrasion resistance tube that is designed for the transfer of bulk materials.

Novaflex 5017TG hose is corrugated to provide maximum flexibility.

Construction:

Tube: ¼" Tan gum natural rubber

Reinforcement: Plies of tire cord and helix wire

Cover: Black SBR corrugated

Length: 50 ft. Ends: plain or soft cuffs

Temperature Range: -40°F (-40°) to +160°F (+71°C)



Part No.	I.D.	O.D.	Plies	WP psi	MBR (in)	VAC" (Hg)	WT LBS/FT
5017TG-02500-00	2½	3.48	2	150	6	29	2.6
5017TG-03000-00	3	3.98	2	150	10	29	3.1
5017TG-04000-00	4	5.0	2	150	16	29	4.1
5017TG-05000-00	5	6.13	4	150	20	29	5.6
5017TG-06000-00	6	7.13	4	150	24	29	6.6
5017TG-08000-00	8	9.27	4	150	32	17	9.95

Novaflex 5017YG = Yellow Novaware tube -
superior abrasion resistance

Novaflex 5018 Bulk Material Transfer Hose

Novaflex 5018 is the higher rated temperature version of Novaflex 5017 designed for transferring bulk materials at maximum temperatures of 200°F. Novaflex 5018 bulk material transfer hose is corrugated to provide maximum flexibility and is designed with a ¼" thick tube for abrasion resistance.

Construction:

Tube: High temperature co-polymer

Reinforcement: Plies of tire cord and helix wire

Cover: Black high temperature co-polymer

Length: 50 ft. Ends: Plain or soft cuffs

Temperature Range: -40°F (-40°C) to +200°F (+93°C)



Part No.	I.D.	O.D.	Plies	WP psi	MBR (in)	VAC (Hg)	WT LBS/FT
5018BE-02500-00	2½	2.92	2	150	6	29	2.6
5018BE-03000-00	3	3.98	2	150	10	29	3.1
5018BE-04000-00	4	5.0	2	150	16	29	4.1
5018BE-05000-00	5	6.13	4	150	20	29	5.6
5018BE-06000-00	6	7.13	4	150	24	29	6.6
5018BE-08000-00	8	9.27	4	150	32	17	9.95

Novaflex 5020 Industrial Vacuum Hose

Designed for light duty commercial vacuum cleaners used in foundries, factories and similar applications where a flexible and lightweight construction is preferred.

Construction:

Tube: 1/16" abrasion resistant

Reinforcement: Fabric with helix wire

Cover: Black corrugated Length 50 ft.

Ends: Plain. (Also available with cuffs.)

Temperature Range: -40°F (-40°) to +160°F (+71°C)
(Depending on compound)



Part No.	I.D.	O.D.	Plies	MBR (in)	WT LBS/FT
5020-01000-00	1	1.38	1	3	0.4
5020-01250-00	1¼	1.63	1	4	0.4
5020-01500-00	1½	1.88	1	5	0.5
5020-02000-00	2	2.38	1	8	0.7
5020-02500-00	2½	2.88	1	8	0.8
5020-03000-00	3	3.38	1	9	0.9
5020-04000-00	4	4.38	1	12	1.9

Novaflex 5020YG = Yellow Novaware tube -
superior abrasion resistance

Novaflex 5164TG Tan Gum Tubing

Wrapped finish, mandrel made tan gum tubing designed for a variety of industrial, construction and chemical applications.



Construction:

Tube: Tan gum
Length: 50 ft
Temperature Range: -40°F (-40°C) to +140°F (+60°C)
Durometer: 42 durometer
Available in EPDM, SBR, Nitrile and Neoprene
A large variety of diameters available ranging from 1 1/4" to 24" upon request.

I.D.	3/16"	1/4"	3/8"	1/2"
	19	25	38	50
1 1/4	5164TG-01250-19	5164TG-01250-25	5164TG-01250-38	5164TG-01250-50
1 1/2	5164TG-01500-19	5164TG-01500-25	5164TG-01500-38	5164TG-01500-50
2	5164TG-02000-19	5164TG-02000-25	5164TG-02000-38	5164TG-02000-50
3	5164TG-03000-19	5164TG-03000-25	5164TG-03000-38	5164TG-03000-50
4	5164TG-04000-19	5164TG-04000-25	5164TG-04000-38	5164TG-04000-50
6	5164TG-06000-19	5164TG-06000-25	5164TG-06000-38	5164TG-06000-50
8	5164TG-08000-19	5164TG-08000-25	5164TG-08000-38	5164TG-08000-50
10	5164TG-10000-19	5164TG-10000-25	5164TG-10000-38	5164TG-10000-50
12	5164TG-12000-19	5164TG-12000-25	5164TG-12000-38	5164TG-12000-50
18*	5164TG-18000-19-306	5164TG-18000-25-306	5164TG-18000-38-306	5164TG-18000-50-306
20*	5164TG-20000-19-300	5164TG-20000-25-300	5164TG-20000-38-300	5164TG-20000-50-300
24*	5164TG-24000-19-300	5164TG-24000-25-300	5164TG-24000-38-300	5164TG-24000-50-300

**25ft. lengths, all other I.D's - 50ft lengths standard.
Cut lengths add 10% (5ft increments)*

Novaflex 5164BG Black Gum Tubing

Wrapped finish, mandrel made tan gum tubing designed for a variety of industrial, construction and chemical applications. Black gum rubber made for those applications where a black color is preferred.



Construction:

Tube: Black gum
Length: 50 ft
Temperature Range: Max temperature +160°F (+71°C)
Durometer: 50 durometer
Available in EPDM, SBR, Nitrile and Neoprene.
A large variety of diameters available ranging from 1 1/4" to 24" upon request.

ID	3/16"	1/4"	3/8"	1/2"
	19	25	38	50
1 1/4	5164BG-01250-19	5164BG-01250-25	5164BG-01250-38	5164BG-01250-50
1 1/2	5164BG-01500-19	5164BG-01500-25	5164BG-01500-38	5164BG-01500-50
2	5164BG-02000-19	5164BG-02000-25	5164BG-02000-38	5164BG-02000-50
3	5164BG-03000-19	5164BG-03000-25	5164BG-03000-38	5164BG-03000-50
4	5164BG-04000-19	5164BG-04000-25	5164BG-04000-38	5164BG-04000-50
6	5164BG-06000-19	5164BG-06000-25	5164BG-06000-38	5164BG-06000-50
8	5164BG-08000-19	5164BG-08000-25	5164BG-08000-38	5164BG-08000-50
10	5164BG-10000-19	5164BG-10000-25	5164BG-10000-38	5164BG-10000-50
12	5164BG-12000-19	5164BG-12000-25	5164BG-12000-38	5164BG-12000-50
18*	5164BG-18000-19	5164BG-18000-25	5164BG-18000-38	5164BG-18000-50
20*	5164BG-20000-19	5164BG-20000-25	5164BG-20000-38	5164BG-20000-50
24*	5164BG-24000-19	5164BG-24000-25	5164BG-24000-38	5164BG-24000-50

**25ft. lengths, all other I.D's - 50ft lengths standard.
Cut lengths add 10% (5ft increments)*

Novaflex 5164BE Black EPDM Gum Tubing

Wrapped finish, mandrel made tan gum tubing designed for a variety of industrial, construction and chemical applications. Black EPDM rubber, made for those applications where heat, chemical resistance and the properties of EPDM are preferable over gum rubber.



Construction:

Tube: Black gum
Length: 50 ft
Temperature Range: Max temperature +300°F (+149°C)
Durometer: 60 durometer
Available in EPDM, SBR, Nitrile and Neoprene.
A large variety of diameters available ranging from 1 1/4" to 24" upon request.

ID	3/16"	1/4"	3/8"	1/2"
	19	25	38	50
1 1/4	5164BE-01250-19	5164BE-01250-25	5164BE-01250-38	5164BE-01250-50
1 1/4	5164BE-01500-19	5164BE-01500-25	5164BE-01500-38	5164BE-01500-50
2	5164BE-02000-19	5164BE-02000-25	5164BE-02000-38	5164BE-02000-50
3	5164BE-03000-19	5164BE-03000-25	5164BE-03000-38	5164BE-03000-50
4	5164BE-04000-19	5164BE-04000-25	5164BE-04000-38	5164BE-04000-50
6	5164BE-06000-19	5164BE-06000-25	5164BE-06000-38	5164BE-06000-50
8	5164BE-08000-19	5164BE-08000-25	5164BE-08000-38	5164BE-08000-50
10	5164BE-10000-19	5164BE-10000-25	5164BE-10000-38	5164BE-10000-50
12	5164BE-12000-19	5164BE-12000-25	5164BE-12000-38	5164BE-12000-50
18*	5164BE-18000-19	5164BE-18000-25	5164BE-18000-38	5164BE-18000-50
20*	5164BE-20000-19	5164BE-20000-25	5164BE-20000-38	5164BE-20000-50
24*	5164BE-24000-19	5164BE-24000-25	5164BE-24000-38	5164BE-24000-50

**25ft. lengths, all other I.D's - 50ft lengths standard.
Cut lengths add 10% (5ft increments)*

Material Handling Hose

Novaflex 5284 Elephant Trunk Hose

Designed for open end discharge and gravity flow of dry bulk materials and abrasives.

Construction:

Tube: 1/8" Tan Gum
 Reinforcement: 2 plies fabric
 Cover: Black SBR Black
 Length: 50 ft standard.
 (Cut lengths available upon request)
 Ends: Plain
 Temperature Range: -20°F (-29°C) to +160°F (+171°C)



Part No.	I.D.	O.D.	Plies	WP psi	WT LBS/FT
5284TG-04000-00	4	4.54	2	100	1.89
5284TG-06000-00	6	6.50	2	75	2.55
5284TG-06625-00	6 ⁵ / ₈	7.12	2	50	2.80
5284TG-08000-00	8	8.50	2	50	3.36
5284TG-08625-00	8 ⁵ / ₈	9.12	2	50	3.62
5284TG-10000-00	10	10.50	2	45	4.18
5284TG-10750-00	10 ³ / ₄	11.25	2	40	4.48
5284TG-12000-00	12	12.62	4	75	6.47
5284TG-12750-00	12 ³ / ₄	13.37	4	70	6.87
5284TG-14000-00	14	14.62	4	65	7.52

Novaflex 5300 Premium Sandblast Hose

Designed with an extra thick, extremely abrasion resistant tube to extend life in sandblasting service. Flexible and kink resistant to reduce operator fatigue and further extend wear of the hose. The best quality sandblast hose on the market today.

Construction:

Tube: Black abrasion resistant synthetic rubber
 Reinforcement: Plies of polyester tire cord
 Cover: Black abrasion and weather resistant synthetic rubber
 Length: 100 ft
 Temperature Range: -20°F (-29°C) to +180°F (+82°C)



Part No.	I.D.	O.D.	Plies	WP psi	WT LBS/FT
5300BS-00500-00	1/2	1.14	2	150	0.51
5300BS-00750-00	3/4	1.52	2	150	0.74
5300BS-01000-00	1	1.88	2	150	1.09
5300BS-01250-00	1 1/4	2.13	2	150	1.28
5300BS-01500-00	1 1/2	2.38	2	150	1.47
5300BS-02000-00	2	2.83	2	150	1.74

Novaflex 5328 Plaster Hose

A flexible, easy to handle, long lasting, high pressure hose specially designed for use with cement, plaster and gypsum. The cover is ozone and weather resistant and the rubber tube is abrasion resistant. Good for jetting applications.

Construction:

Tube: Black abrasion resistant synthetic rubber
Reinforcement: Plies of polyester tire cord
Cover: Brown abrasion and weather resistant synthetic rubber
Length: 100 ft
Temperature Range: Up to +180°F (+82°C)



Part No.	I.D.	O.D.	Plies	WP psi	WT LBS/FT
5328BS-01250-00	1¼	1.84	4	600	0.97
5328BS-01500-00	1½	2.09	4	600	1.10
5328BS-02000-00	2	2.72	6	600	1.80
5328BS-02500-00	2½	3.22	6	600	2.18
5328BS-03000-00	3	3.77	6	500	2.74

Novaflex 5331 Dredge Sleeves/Sand Discharge Hose

A specially compounded abrasive resistant and static conductive tube. This hose is manufactured to very close O.D. tolerances.

Construction:

Tube: Black abrasion resistant synthetic rubber
Reinforcement: Polyester tire cord
Cover: Black abrasion and weather resistant synthetic rubber
Length: 20 ft.
Temperature Range: Up to +180°F (+82°C)



Part No.	I.D.	O.D.	Tube Gauge	Plies	WP psi	WT LBS/FT
5331BS-04500-00	4½	5.73	¾	4	150	5.45
5331BS-06000-00	6	7.25	¾	4	150	7.51
5331BS-06625-00	6¾	8.07	¾	6	150	9.26
5331BS-08625-00	8¾	10.19	¾	8	150	12.97
5331BS-10750-00	10¾	12.50	½	8	150	17.83
5331BS-12750-00	12¾	14.55	½	8	150	22.80
5331BS-14000-00	14	16.04	½	12	150	27.21
5331BS-16000-00	16	18.04	½	12	150	30.82

Novaflex 5332 Sand Suction & Discharge Hose

A specially compounded abrasive resistant and static conductive tube. This hose is manufactured to very close O.D. tolerances.

Construction:

Tube: Black abrasion resistant synthetic static conductive rubber
Reinforcement: Polyester tire cord with helix wire (full vacuum rated)
Cover: Smooth black abrasion and weather resistant synthetic rubber
Length: 20 ft.
Temperature Range: Up to +180°F (+82°C)



Part No.	I.D.	O.D.	Tube Gauge	Plies	WP psi	WT LBS/FT
5332BS-04000-00	4	5.54	¾	4	150	6.75
5332BS-04500-00	4½	5.95	¾	4	150	7.46
5332BS-06000-00	6	7.57	¾	4	100	11.37
5332BS-06625-00	6¾	8.20	¾	4	100	12.41
5332BS-08000-00	8	9.64	¾	6	100	15.86
5332BS-08625-00	8¾	10.32	¾	6	100	16.87
5332BS-10000-00	10	12.06	½	6	100	25.42
5332BS-10750-00	10¾	12.86	½	6	100	22.06
5332BS-12000-00	12	14.11	½	6	100	30.55
5332BS-12750-00	12¾	14.86	½	6	100	32.29
5332BS-14000-00	14	16.37	½	8	100	42.66

Novaflex 5332YG = Yellow Novaware tube - superior abrasion resistance. Temperature to 160°F (171°C)

Material Handling Hose

Novaflex 5785 Concrete Pumping Hose

High pressure hose designed to handle the pumping of concrete, plaster or grout mixture. All purpose cover provides excellent flexibility and wear resistance to abrasive slurries.

Construction:

Tube: Abrasion resistant static dissipating SBR Reinforcement: 4 plies polyester tire cord
Cover: Black EPDM/SBR
Length: 100 ft
Temperature Range: -20°F (-29°C) to +160°F (+171°C)



Part No.	I.D.	O.D.	Plies	WP psi	WT LBS/FT
5785-01000-00	1	1.83	4	800	0.75
5785-01250-00	1¼	1.93	4	800	0.80
5785-01500-00	1½	2.21	4	800	1.58
5785-02000-00	2	2.81	4	800	1.58
5785-02500-00	2½	3.36	6	500	1.95
5785-03000-00	3	4.00	6	500	2.90
5785-04000-00	4	5.27	6	400	3.95

Novaflex 5760/5761/5762 Bulk Material Discharge Hose

Abrasion resistant hose designed for transferring dry bulk material such as cement, sand, lime, fertilizers, etc. Static dissipating tube is designed to resist cutting and abrasion. Cover is abrasion, age and weather resistant.

Construction:

Tube: Black abrasion resistant SBR
Reinforcement: Multiple plies of tire cord, with static wire
Cover: Black synthetic rubber
Length: 100 ft
Temperature Range: -10°F (-23°C) to +180°F (+82°C)



Part No.	I.D.	Type	Tube Gauge	O.D.	Plies	WP psi	WT LBS/FT
5760-04000-00	4	5760	⅛	4.40	2	100	1.57
5761-04000-00	4	5761	3/16	4.50	2	75	1.94
5762-04000-00	4	5762	¼	4.60	2	75	2.44
5762-05000-00	5	5762	¼	5.64	2	75	3.41
5762-06000-00	6	5762	¼	6.64	2	75	4.04

Novaflex 5770/5771/5772 Bulk Material Discharge Hose

Abrasion resistant hose designed for transferring dry bulk material such as cement, sand, lime, fertilizers, etc. Static dissipating tube is designed to resist cutting and abrasion. Cover is abrasion, age and weather resistant.

Construction:

Tube: Black abrasion resistant static conductive natural rubber blend
Reinforcement: Multiple plies of tire cord
Cover: Black synthetic rubber
Length: 100 ft
Temperature Range: -10°F (-23°C) to +180°F (+82°C)



Part No.	I.D.	Type	Tube Gauge	O.D.	Plies	WP psi	WT LBS/FT
5770-04000-00	4	5770	⅛	4.45	2	100	1.57
5771-04000-00	4	5771	3/16	4.58	2	75	1.94
5772-04000-00	4	5772	¼	4.70	2	75	2.44
5772-05000-00	5	5772	¼	5.74	2	75	3.41
5772-06000-00	6	5772	¼	6.74	2	75	4.04

Novaflex 5776 ¼" tube; suction/hardwall version available

Part No.	Type	Tube Gauge	I.D.	O.D.	Plies	WP psi	WT LBS/FT
5776-04000-00	5776	¼	4	6.95	2	75	4.25

Novaflex 5900 Heavy Duty Sandblast Hose

Heavy duty (4 ply) abrasion resistant sand and shot blast hose that will accept higher working pressures and the most severe applications.

Construction:

Tube: Black abrasion resistant synthetic rubber

Reinforcement: Plies of polyester tire cord

Cover: Black abrasion and weather resistant synthetic rubber

Length: 100 ft

Temperature Range: -20°F (-29°C) to +180°F (+82°C)



Part No.	I.D.	O.D.	Plies	WP psi	WT LBS/FT
5900BG-01000-00	1	1.89	4	250	1.15
5900BG-01250-00	1¼	2.14	4	250	1.35
5900BG-01500-00	1½	2.39	4	250	1.54
5900BG-02000-00	2	2.89	4	250	1.95
5900BG-02500-00	2½	3.40	4	250	2.39
5900BG-03000-00	3	3.90	4	150	2.78
5900BG-04000-00	4	5.26	4	150	5.43

Novaflex AF Liner

A low pressure hose, designed to be extremely lightweight, but offer high flexibility and abrasion resistance in vacuum and discharge applications.

Construction:

Tube: ¼" ultra high abrasion resistant red natural rubber

Reinforcement: Multiple plies of fabric with steel helix

Cover: Rubberized fabric

Temperature Range: -30°F (-35°C) to +140°F (+60°C)

Other rubber tubes available: SBR, EPDM



Part No.	I.D.	WP	MBR	VAC	WT LBS/FT
3MBAF2RA02	2	30	10	29"	0.95
3MBAF2RA02.08	2½	30	13	29"	1.13
3MBAF2RA03	3	30	15	29"	1.40
3MBAF2RA04	4	25	20	28"	1.98
3MBAF2RA05	5	20	25	26"	2.40
3MBAF2RA06	6	16	30	23"	2.85
3MBAF2RA07	7	14	35	18"	3.30
3MBAF2RA08	8	12	40	12"	3.75
3MBAF2RA10	10	10	50	8"	5.15
3MBAF2RA12	12	8	60	5"	6.15